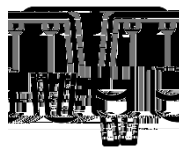


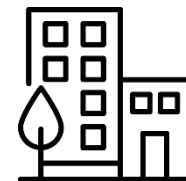
# Lochgair Responses 2019

## Priority Areas for Improvement:

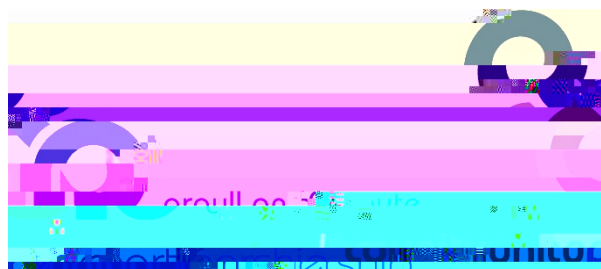
Moving Around



Play and  
Recreation



Facilities and  
Amenities

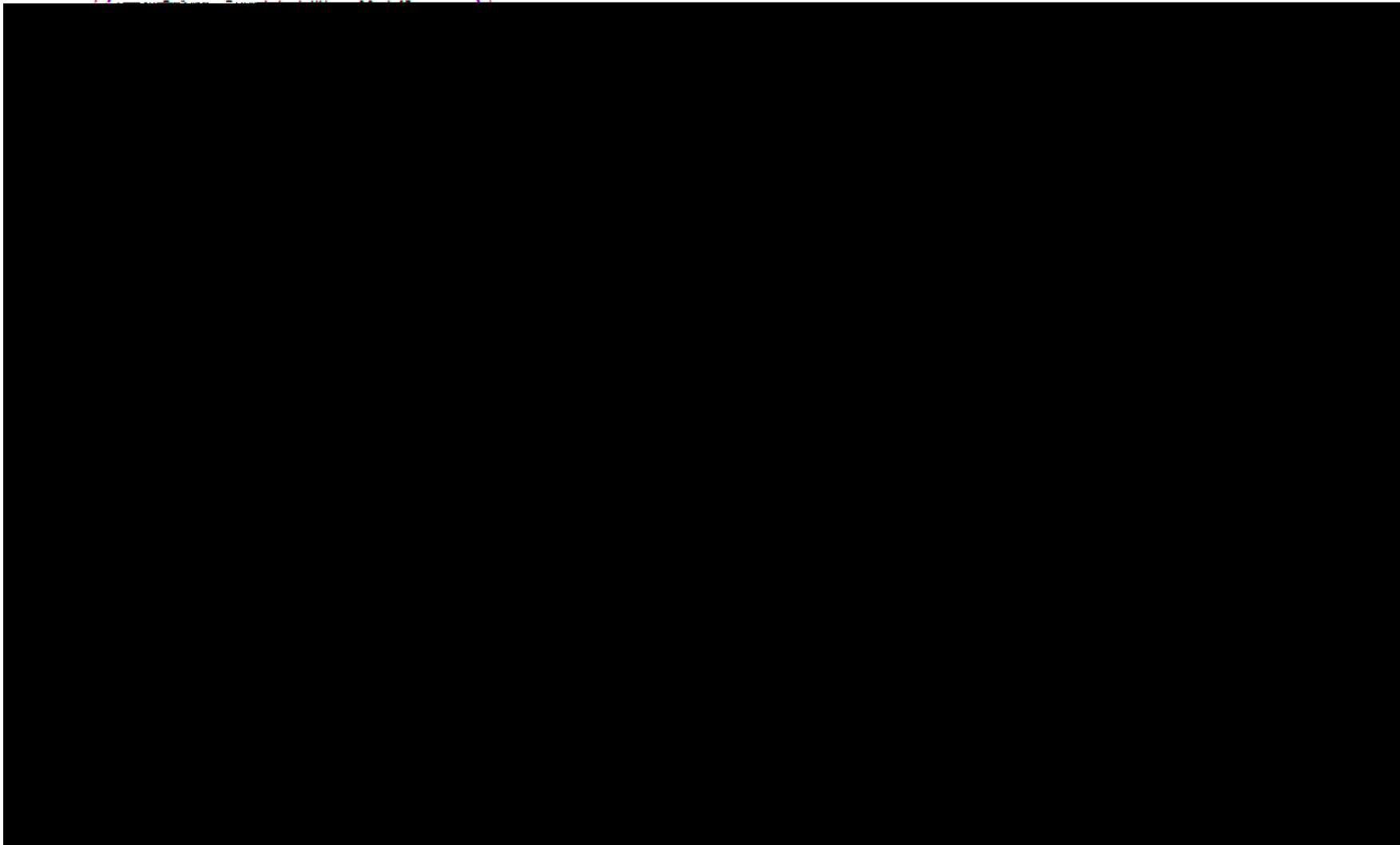


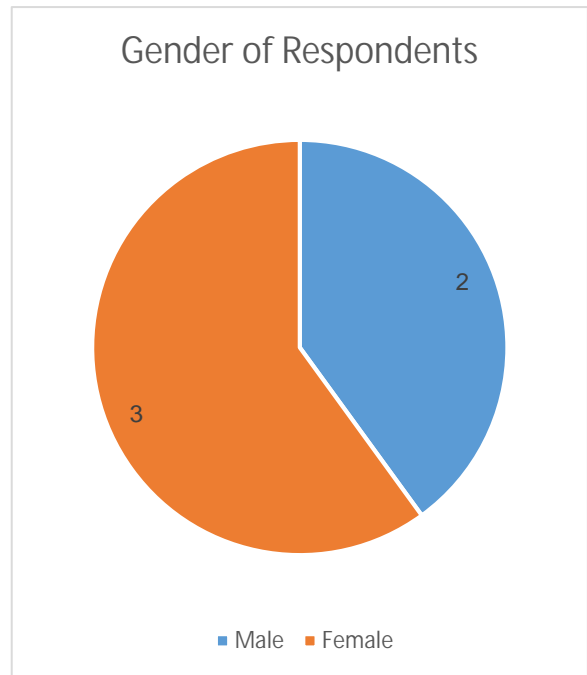
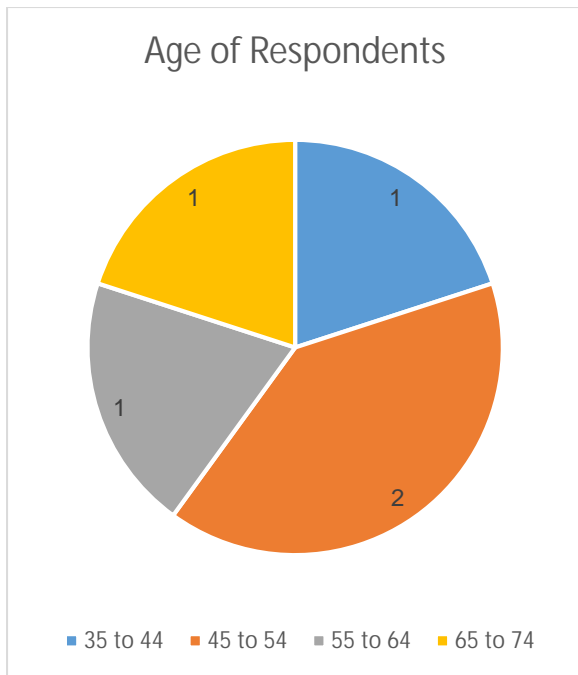
How good is your place? Area wide engagement results using the Place Standard Tool

Between May and October 2019, the Community Planning Partnership (CPP) used

## Lochgair Responses

Our Top Rated Areas are:





#### Thematic areas by lowest score to highest score

Thematic Area	Average Score
<a href="#">Moving Around</a>	1.8
<a href="#">Play and Recreation</a>	2.2
<a href="#">Facilities and Amenities</a>	2.4
<a href="#">Public Transport</a>	3.0
<a href="#">Traffic and Parking</a>	3.4
<a href="#">Social Contact</a>	3.4
<a href="#">Work and Local Economy</a>	3.8
<a href="#">Housing and Community</a>	4.2
<a href="#">Streets and Spaces</a>	4.4
<a href="#">Influence and Sense of Control</a>	4.4
<a href="#">Care and Maintenance</a>	4.6
<a href="#">Identity and Belonging</a>	5.6
<a href="#">Natural Space</a>	6.2
<a href="#">Feeling Safe</a>	6.6

## Q1.Moving Around: Can I easily walk and cycle around using good quality routes?

5 responses in total– Average Score of .8							
Score of 1	Score of 2	Score of 3	Score of 4	Score of 5	Score of 6	Score of 7	No response
1 responses	4 responses	0 responses	0 responses	0 responses	0 responses	0 responses	0 responses

### Comments

Walking and cycling is limited to the village unless you brave the A83
Access to and from Lochgair is mainly via the A83 which is not safe for walking and cycling. Public transport is limited.
Limited to within the small footprint of the village. There is no link to forestry trails, outlying areas of the village or other villages/towns by foot or bike without using the A83. Using the A83 on foot or by cycle does not feel pleasant and safe.
There is no pavement at the north end of Lochgair and a narrow bridge with busy traffic flow which makes walking dangerous.
The village of Lochgair is split by the A83 trunk road. While this provides easy access to public transport, the volume of traffic and especially large lorries (such as the wood lorries) means that walking between different parts of the village is highly hazardous, especially as the 40 mile speed limit is not always obeyed; there is no footpath for houses on the main road to the north of the village; and the A83 cuts off the only meeting point in the village (the village hall) from the largest section of the village. Access to safe areas to cycle, such as the local forests, means having to take a car, because of the danger from traffic on the A83.

## Q2. Public Transport Does public transport meet my needs?

5 responses in total - Average Score of 3.0							
Score of 1	Score of 2	Score of 3	Score of 4	Score of 5	Score of 6	Score of 7	No response
0 responses	2 responses	2 responses	0 responses	1 responses	0 responses	0 responses	0 responses

### Comments

There are a limited number of sr

Q3. Traffic and Parking Do traffic and parking arrangements allow people to move around safely?

5 responses in total - Average Score of 3.4

Score of 1   Score of 2   Score of 3   Score of 4   Score of 5   Score of 6   Score of 7   NoS

**Q4. Streets and Space** Do the streets and public spaces create an attractive place that is easy to navigate?

5 responses in total - Average Score of 4.4							
Score of 1	Score of 2	Score of 3	Score of 4	Score of 5	Score of 6	Score of 7	No response
0 responses	0 responses	1 responses	2 responses	1 responses	1 responses	0 responses	0 responses

**Comments**

Lochgair is an attractive local feature with exceptional wildlife and views. The village also features refurbished historic cottages which provide an attractive frontage. The southern side of the loch has a public path which is well used, accessed by an attractive footbridge funded by the community. Asknish House, which was derelict, has now been purchased and being restored to its former glory. However there are no public buildings and no public squares to provide a meeting point or signage to highlight landmarks or natural features.
The village is attractive. Paths are easy to use but paths and footbridge are maintained on the good will of residents and fundraising.
There are few distinctive building in Lochgair and it is harder to enjoy the location in bad weather.



## Q5. Natural Space Can I experience good quality green spaces?

5 responses in total - Average Score of 6.2							
Score of 1	Score of 2	Score of 3	Score of 4	Score of 5	Score of 6	Score of 7	No response
0 responses	0 responses	0 responses	1 responses	0 responses	1 responses	3 responses	

## Q6. Play and Recreation:

Q7. Facilities and Amenities: Does my place have the things I need to live and enjoy life? This could include shops, schools, clubs, health services or places to eat and drink.

5 responses in total - Average Score of 2.4							
Score of 1	Score of 2	Score of 3	Score of 4	Score of 5	Score of 6	Score of 7	No response
0 responses	4 responses	0 responses	1 responses	0 responses	0 responses	0 responses	0 responses

Comments

Q8. Work and Local Economy: there an active local economy with good quality work opportunities?

5 responses in total - Average Score of 3.8							
Score of 1	Score of 2	Score of 3	Score of 4	Score of 5	Score of 6	Score of 7	No response
1 responses	0 responses	0 responses	3 responses	0 responses	1 responses	0 responses	0 responses

Comments

Q9. Housing and Community: Do the homes in my area support the needs of the community?

5 responses in total – Average Score of 4.2							
Score of 1	Score of 2	Score of 3	Score of 4	Score of 5	Score of 6	Score of 7	No response
0 responses	0 responses	1 responses	3 responses	0 responses	1 responses	0 responses	0 responses

Comments

The population is mainly retired people and holiday homes which puts house prices high. When affordable houses do go on the market, people are not interested due to distance from amenities.
Yes
The housing is mostly owner occupied, and includes second homes which are occupied for significant parts of the year. Some houses have been adapted to meet the needs of disabled occupants, but there is no social housing to meet the needs of an ageing population as an alternative to moving into residential accommodation.

## Q10. Social Contacts there a range of spaces and opportunities to meet people?

5 responses in total - Average Score of 3.4							
Score of 1	Score of 2	Score of 3	Score of 4	Score of 5	Score of 6	Score of 7	No response
0 responses	1 responses	2 responses	1 responses	1 responses	0 responses	0 responses	0 responses

### Comments

Despite Lochgair having only one small village hall a wide range of different indoor activities are on offer for the older age group, which provide opportunities for people to meet. However there is not much on offer for the younger age group and nowhere for them to meet.

The only meeting space in Lochgair is the pub.

The village association creates opportunities for people to meet, if they wish.

Q11.Identity and Belonging Does this place have a positive identity and do I feel I belong?

5 responses in total - Average Score of 5.6							
Score of 1	Score of 2	Score of 3	Score of 4	Score of 5	Score of 6	Score of 7	No response
0 responses	0 responses	0 responses	0 responses	2 responses	3 responses	0 responses	0 responses

Comments

Strong community organisation, the lochgair association. Community council does not create a welcoming environment at its meetings.

'The Long Memories Project' has run a number of exhibitions which are

076 10BT0.002 Tc 11.04c51.7 (

## Q12. Feeling Safe Do I feel safe here?

5 responses in total – Average Score of 6.6							
Score of 1	Score of 2	Score of 3	Score of 4	Score of 5	Score of 6	Score of 7	No response
0 responses	0 responses	0 responses	0 responses	0 responses	2 responses	3 responses	0 responses

### Comments

I feel perfectly safe in Lochgair

There have not been any recent safety concerns to do with theft or other crimes. The main fear is that of telephone or internet scams. Information on avoiding these is emailed to residents when the local association is alerted. Q4edar is



Q13. Care and Maintenance Are buildings and spaces well cared for?

5 responses in total - Average Score of 4.6							
Score of 1	Score of 2	Score of 3	Score of 4	Score of 5	Score of 6	Score of 7	No response
0 responses	1 responses	0 responses	2 responses	0 responses	1 responses	1 responses	0 responses

Comments



What are the main issues and priorities for change that you have identified?

1. Public parking adjacent to a refurbished village hall or indoor meeting place;
2. Local employment opportunities - start up business units;
3. Mixed range of social housing units for older people downsizing; and housing for first time buyers.

A pavement across the narrow road bridge in Lochgair, north of the hotel would be useful.

Heavy reliance on good will of residents. The benefit is that much of the village is retired and has time to do this. As they age and the younger population is still working this could cause issues.

What actions could be taken to deal with these?

1. Land belonging to Forestry set aside for parking; to compliment proposals by the local