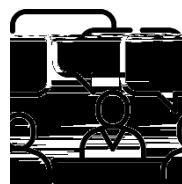


Clynder Responses 2019

Priority Areas for Improvement:

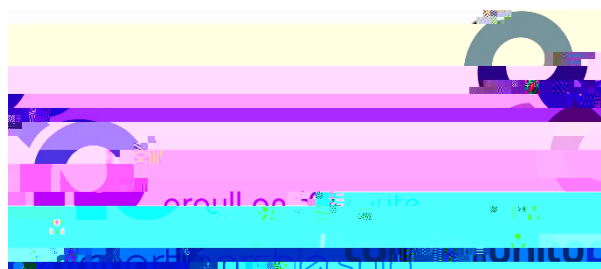
Moving
Around



Influence and
Sense of
Control



Play and
Recreation



How good is your place? Area wide engagement results using the Place Standard Tool

Between May and October 2019, the Community Planning Partnership (CPP) used

Clynder Responses

Our Top Rated Areas are:

Respondents rated this area 5.8 out of 7.

Natural

Q1. Moving Around: Can I easily walk and cycle around using good-quality routes?

9 responses in total – Average Score of 2.4							
Score of 1	Score of 2	Score of 3	Score of 4	Score of 5	Score of 6	Score of 7	No response
2 responses	5 responses	0 responses	1 responses	0 responses	1 responses	0 responses	0 responses

Comments

Although there are some good, off road, walking paths, there is no footpath along the road side for long distances for getting to shops, the ferry either by bike or walking. The routes outside the village without footpaths are very busy with traffic, a high proportion of which is usually speeding.

Bad state of the pavements and roads, I would not feel happy cycling on the roads.

Lack

Q2. Public Transport: Does public transport meet my needs?

9 responses in total – Average Score of 4.1							
Score of 1	Score of 2	Score of 3	Score of 4	Score of 5	Score of 6	Score of 7	No response
0 responses	1 responses	2 responses	2 responses	3 responses	1 responses	0 responses	0 responses

Comments

Bus runs every hour but often late.
Buses and ferry times don't connect
Fine in the area.
More frequent bus service especially on Sundays, less expensive options for regular users Only 1 bus per hour during week but hourly on Sundays. Trains into Helensburgh rarely match

Q3. Traffic and Parking: Do traffic and parking arrangements allow people to move around safely?

9 responses in total – Average Score of 4.8							
Score of 1	Score of 2	Score of 3	Score of 4	Score of 5	Score of 6	Score of 7	No response
0 responses	0 responses	2 responses	2 responses	2 responses	2 responses	1 responses	0 responses

Comments

Like that in Helensburgh that parking is free for a set period and then you are charged. Parking is reasonable however the main Shore Road is at times a racetrack. Few vehicles, i heavy tippers and buses pay heed to the speed limit. There are too many cars and vans exceeding the speed limit overtaking vehicles which are travelling legally. With this as a normal traffic pattern how can we safely ask elderly al[.he s(e)7e s(e)7e .6 28 >>BDC 11.04 -0 0 11.04 7

Q4. Streets and Spaces: Do the streets and public spaces create an attractive place that is easy to navigate?

9 responses in total – Average Score of 3.8

Q5. Natural Space: Can I experience good quality green spaces?

9 responses in total – Average Score of 5.8

Q6. Play and Recreation:

Q7. Facilities and Amenities: Does my place have the things I need to live and enjoy life? This could include shops, schools, libraries, health services or places to eat and drink.

9 responses in total – Average Score of 3.8

Score of 1 Score of 2 Score of 3 Score of 4 Score of 5 Score of 6 Score of 7 No response

Q8. Work and Local Economy: Is there an active local economy with good-quality work opportunities?

9 responses in total – Average Score of 3.8

Q9. Housing and Community: Do the homes in my area support the needs of the community?

9 responses in total – Average Score of 4.8							
Score of 1	Score of 2	Score of 3	Score of 4	Score of 5	Score of 6	Score of 7	No response
0 responses	0 responses	2 responses	1 responses	3 responses	3 responses	0 responses	0 responses

Comments

More adapted accommodation is needed for the elderly.
The village is small and has insufficient renty.

Q10. Social Contact: Is there a range of spaces and opportunities to meet people?

9 responses in total – Average Score of 3.9							
Score of 1	Score of 2	Score of 3	Score of 4	Score of 5	Score of 6	Score of 7	No response
0 responses	2 responses	1 responses	3 responses	2 responses	1 responses	0 responses	0 responses

Comments

Howie pavilion and princess Louise Hall both down, most residents have to leave the immediate area for social reasons.
 If you go to church thsQ11.04()-11.j EMC149r09 0 11.(c)- 31ip6 (h)-2l09 0 11()-11.6 (n)-0.2

Q11. Identity and Belonging: Does this place have a positive identity and do I feel I belong?

9 responses in total – Average Score of 4.7							
Score of 1	Score of 2	Score of 3	Score of 4	Score of 5	Score of 6	Score of 7	No response
1 responses	0 responses	1 responses	1 responses	2 responses	4 responses	0 responses	0 responses

Comments

Clynder has a long history which could be used to attract visitors. The village was a leading supplier of slate and had an early railway which moved slate down from Peaton hill onto a purpose built pier. A further 2 jetties were built for the owners coming their holiday homes from Glasgow. Clynder used to have a hotel, petrol station and shops and with suitable help could become an excellent base to explore the peninsula.
I have chosen to settle here from abroad this is my home.
Like all small towns if you're not born there it makes it difficult
No sense of identity as no real Centre in village.

Q12. Feeling Safe: Do I feel safe here?

9 responses in total – Average Score of 5.5



Q13. Care and Maintenance: Are buildings and spaces well cared for?

9 responses in total – Average Score of 3.7							
Score of 1	Score of 2	Score of 3	Score of 4	Score of 5	Score of 6	Score of 7	No response
0	1	2	5	1			

Q14. Influence and Sense of Control: Do I feel able to take part in decisions and help change things for the better?

9 responses in total – Average Score of 3							
Score of 1	Score of 2	Score of 3	Score of 4	Score of 5	Score of 6	Score of 7	No response
3 responses	0 responses	2 responses	2 responses	2 responses	0 responses	0 responses	0 responses

What actions could be taken to deal with these?

Help create a community council to help bring together the villagers

Road sweepers