

Kilchrenan Responses 2019

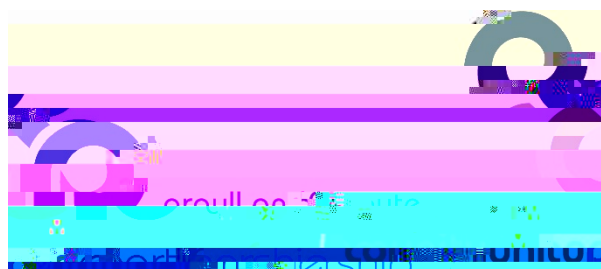
Priority Areas for Improvement:



Work and Local
Economy

Moving Around

Public Transport



How good is your place? Area wide engagement results using the Place Standard Tool

Between May and October 2019, the Community Planning Partnership (CPP) used

Multi-Step Process

Step 1: Initial Assessment and Planning

Step 2: Data Collection and Analysis

[REDACTED]

Q1. Moving Around: Can I easily walk and cycle around using good-quality routes?

5 responses in total – Average Score of 3.8

Score of 1 Score of 2 Score of 3 Score of 4 Score of 5 Score of 6 Score of 7

Q2. Public Transport: Does public transport meet my needs?

5 responses in total – Average Score of 4

Score of 1 Score of 2 Score of 3 Score of 4 Score of 5 Score of 6 Score of 7

Q3. Traffic and Parking: Do traffic and parking arrangements allow people to move around safely?

5 responses in total –

Q4. Streets and Spaces: Do the streets and public spaces create an attractive place that is easy to navigate?

5 responses in total – Average Score of 5.4

Score of 1

Q5. Natural Space: Can I experience good quality green spaces?

Q6. Play and Recreation: Can I access a range of places for play and recreation?

5 responses in total –

Q7. Facilities and Amenities: Does my place have the things I need to live and enjoy life? This could include shops, schools, libraries, health services or places to eat and drink.

2

5 responses in total – Average Score of 4.6							
Score of 1	Score of 2	Score of 3	Score of 4	Score of 5	Score of 6	Score of 7	No response
0	0	1	1	2	1	0	0
responses							

Q8. Work and Local Economy: Is there an active local economy with good-quality work opportunities?

5 responses in total – Average Score of 3.2							
Score of 1	Score of 2	Score of 3	Score of 4	Score of 5	Score of 6	Score of 7	No response
0 responses	1 responses	2 responses	2 responses	0 responses	0 responses	0 responses	0 responses

Comments

Q9. Housing and Community: Do the homes in my area support the needs of the community?

5 responses in total – Average Score of 4.4

Q11. Identity and Belonging: Does this place have a positive identity and do I feel I belong?

Q12. Feeling Safe: Do I feel safe here?

5 responses in total – Average Score of 6							
Score of 1	Score of 2	Score of 3	Score of 4	Score of 5	Score of 6	Score of 7	No response
0 responses	0 responses	0 responses	0 responses	0 responses	5 responses	0 responses	0 responses

Comments

This is a very safe area with very little antisocial behaviour.

Q13. Care and Maintenance: Are buildings and spaces well cared for?

5 responses in total – Average Score of 5.2							
Score of 1	Score of 2	Score of 3	Score of 4	Score of 5	Score of 6	Score of 7	No response
0 responses	1 responses	0 responses	0 responses	0 responses	4 responses	0 responses	0 responses

Comments

Roads, road edges (broken through large lorry usage), of recycling facilities
The area looks good apart from litter discarded by car travellers.

Q14.

What are the main issues and priorities for change that you have identified?

1. Finding a solution to allow children to cycle/ walk safely and daily, that is disabled friendly.
2. Finding a solution to making the football field a useable space changing frequency and timing of transport, or finding a solution to allowing children to travel around Argyll for education, and meeting with others in small schools, without the excessive costs, or time limited availability

Better Public Transport Better road conditions Houses to be put on to mains water for free if want it Better bin collection

Better transport, better walking space.

What actions could be taken to deal with these?